

microMend[®] PRO

— Skin Closure Device —

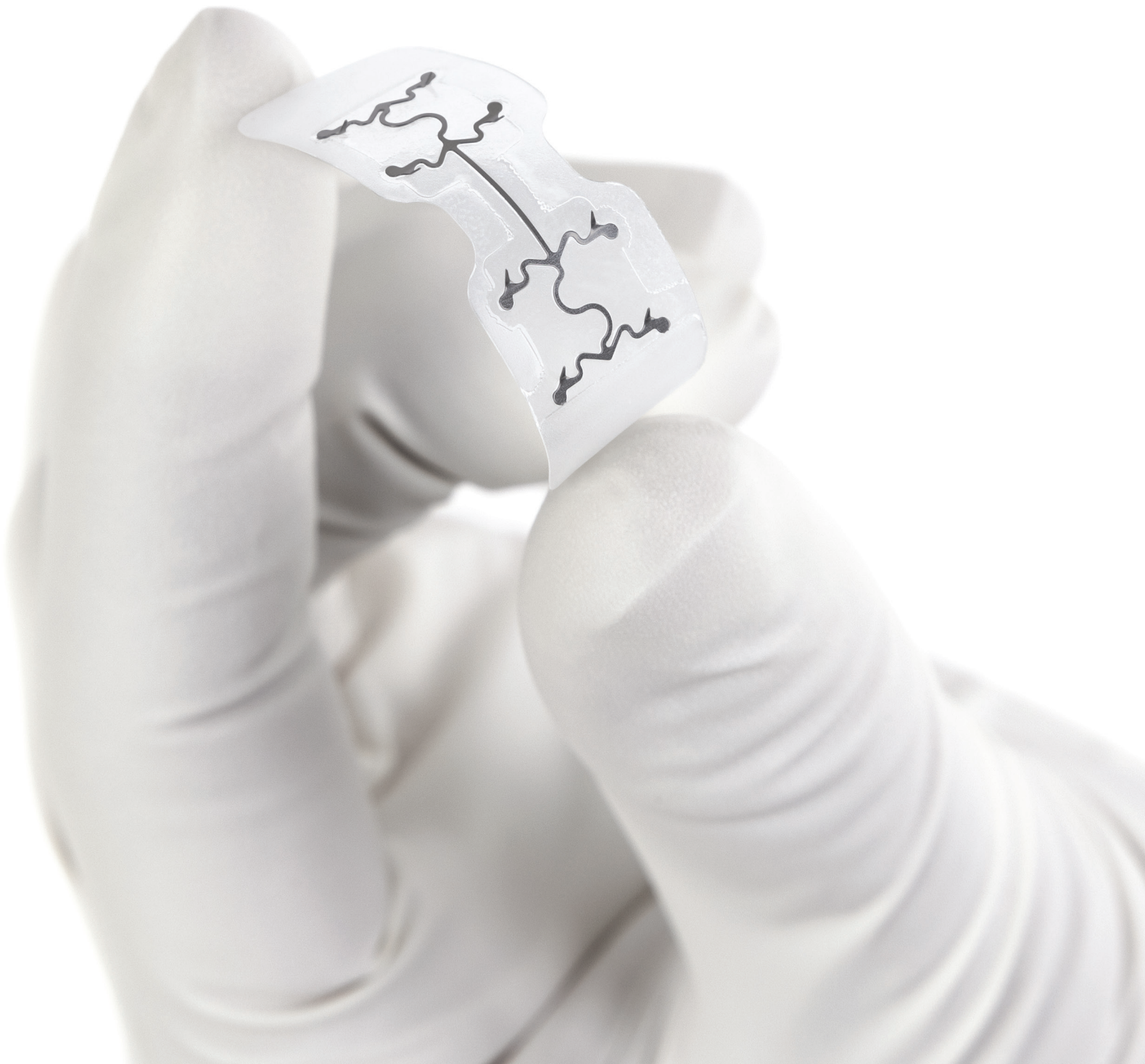
DISTRIBUTED BY
corzamedical[®]

Simple as a Bandage, Holding Strength of a Suture

Product Information Kit



**Closes Wounds
Faster Than Sutures.!**



microMend[®] PRO

— Skin Closure Device —

microMend PRO is a Rapid Skin Closure Device That Uses Painless Microstaple Technology to Provide Strong and Secure Wound Approximation.



Speed

Designed like a butterfly bandage, microMend PRO can be applied easily and rapidly within seconds.



Throughput

Rapid application that is designed to significantly reduce procedure time, increase patient capacity, and reduce facility costs.



Efficiency

Can be applied by a broad range of medical personnel with minimal training which frees up physicians to perform additional procedures.



Cosmesis

Improved cosmetic outcomes versus sutures due to the reduction of train track and other types of scarring.



Painless

Little to no pain and gentle when applied making it ideal to use on children and fragile skin.



Ease of Use

Patients can remove microMend PRO themselves which eliminates a return clinic visit that is typically not reimbursed.

Anatomy of microMend PRO

An Alternative to Sutures

CANTILEVER SPRINGS

Provides uniform tension across wound and designed to help reduce skin irritation.

MICROSTAPLES

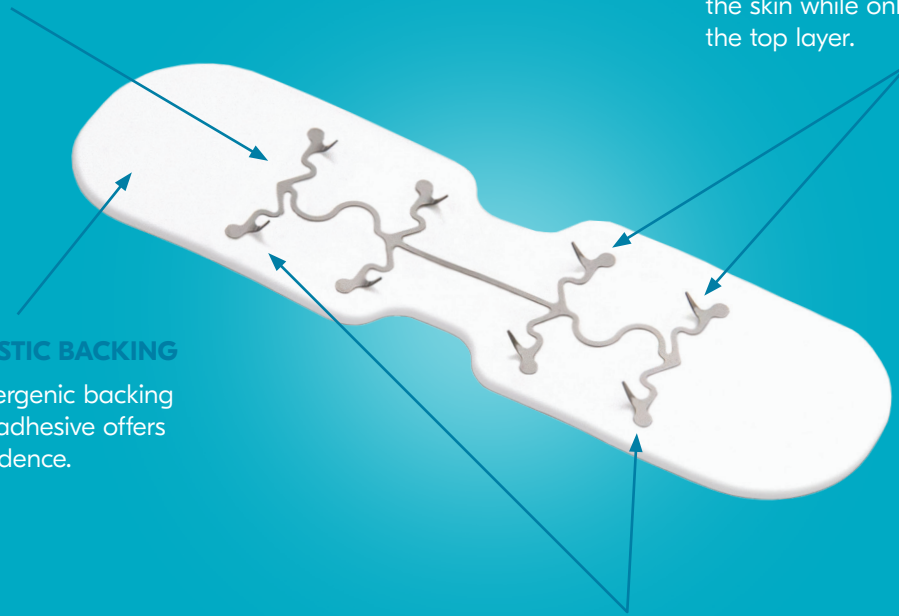
Provides strong adherence to the skin while only reaching the top layer.

CLEAR ELASTIC BACKING

The hypoallergenic backing with acrylic adhesive offers added confidence.

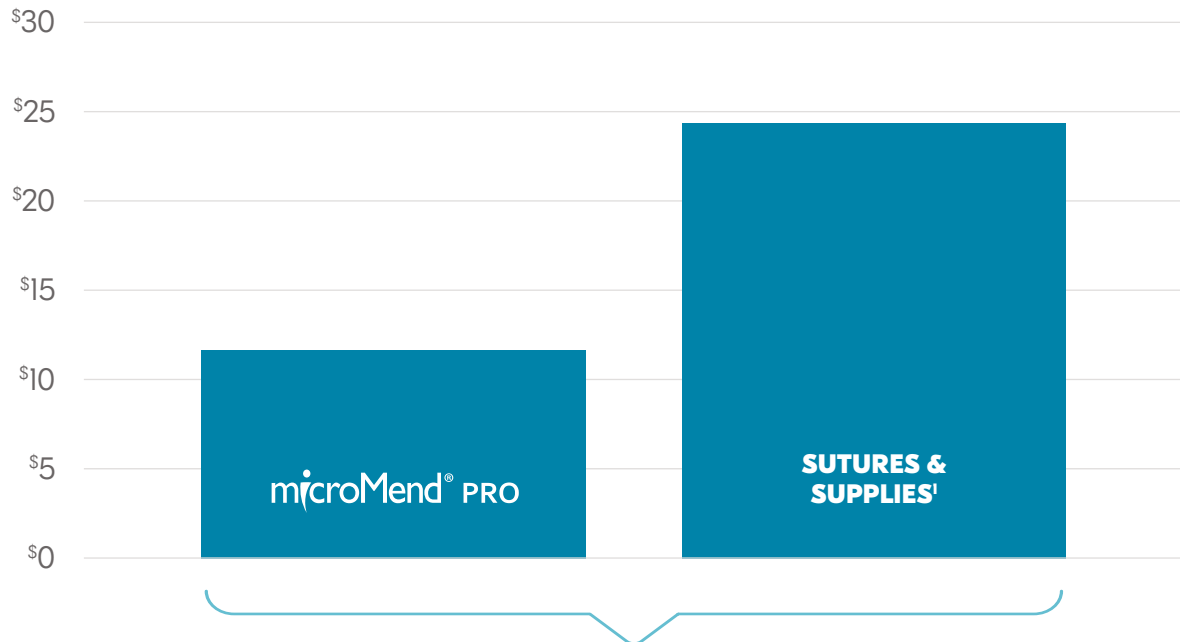
MICROSTAPLE ARRAY

The holding strength of a 3-0 nylon suture.¹



Economics of microMend PRO vs. Sutures

Direct Cost Comparison



Reduced Supplies Cost with microMend PRO

Breakdown of Supplies

microMend PRO Supplies

microMend PRO

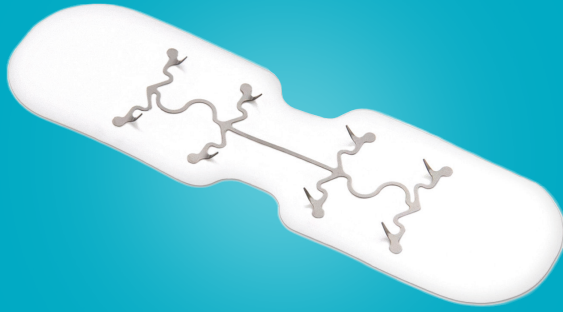
Suture Supplies

Sutures • Syringe • Lidocaine • Suturing Tools

1. Data on File.

Device Selection Guidance for Lacerations

LARGE



Ideal for Most Wounds.

- Head and Neck
- Hands and Feet
- Torso and Extremities

MEDIUM



Ideal for Small Lacerations.

- Face
- Hands
- Feet

SMALL



Ideal for Small Discrete Areas.

- Face
- Fingers
- Toes

Clinical Applications for microMend PRO

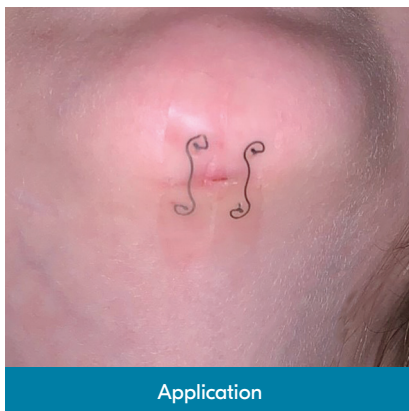
Laceration Repair



Skin Tears



Pediatric Patients



Clinical Study

Study Overview²



microMend PRO is a feasible alternative to closing lacerations in the Emergency Department (ED).

Study Design:

Single arm clinical study conducted at two EDs within a major healthcare system. It consisted of thirty-one adult patients (≥ 18 years old) presenting to the ED with a laceration requiring skin closure.

Study End Points:

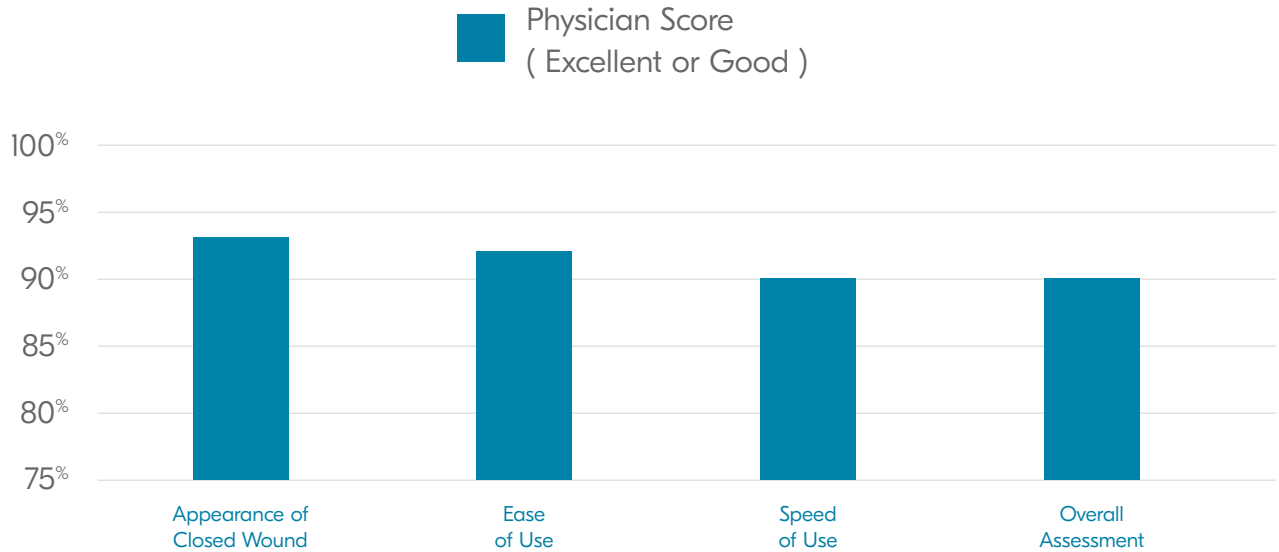
Evaluate the feasibility and acceptability of using microMend PRO to close wounds in the ED. Additionally, assess the patient & ED physician's experience and cosmesis of using the device.

Study Results

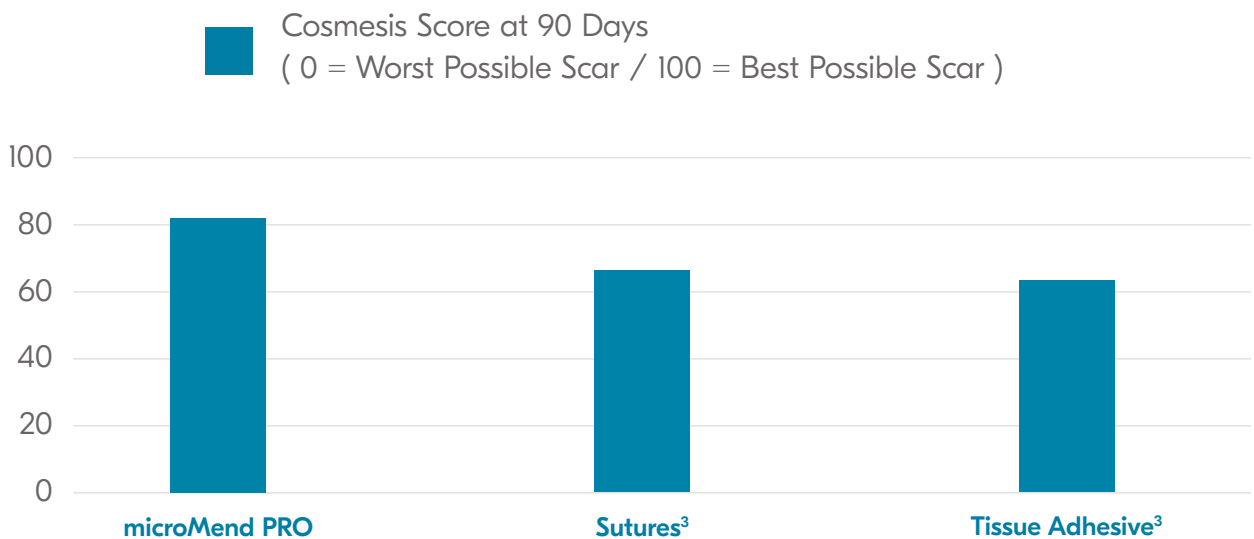
Outcomes	Metrics
Male / Female	52% / 48%
Mean Age	45.6 Years
Mean Wound Length	2.36 cm
Cosmetic Score at 90 Days	84.1 out of 100 using VAS
Mean Pain Score on Application	7.28 out of 100 using VAS
Mean Application Time	2.9 min.

2. Nizami T, Beaudoin F, Suner S, et al. Evaluation of microMend wound closure device in repairing skin lacerations. *Emerg Med J* (in press).

ED Healthcare Provider Assessment



Cosmesis Assessment Using Mean Visual Analog Scale

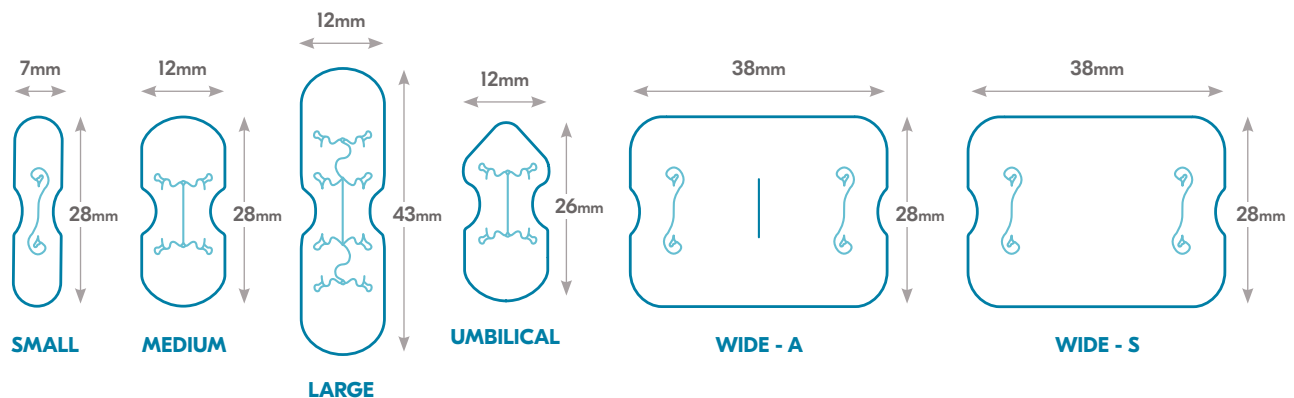


3. Quinn J, Wells G, Sutcliffe T, et al. A randomized trial comparing octylcyanoacrylate tissue adhesive and sutures in the management of lacerations. *JAMA* 1997;277:1527–30.

microMend PRO Portfolio

CODE	DESCRIPTION	SIZE	UNIT OF SALE
MM12XS2	Small	7mm x 28mm	12 packs of 2 / box (24 devices)
MM12SM2	Medium	12mm x 28mm	12 packs of 2 / box (24 devices)
MM12SM4	Medium	12mm x 28mm	12 packs of 4 / box (48 devices)
MM12LG2	Large	12mm x 43mm	12 packs of 2 / box (24 devices)
MM12LG4	Large	12mm x 43mm	12 packs of 4 / box (48 devices)
MM12SU2	Umbilical	12mm x 26mm	12 packs of 2 / box (24 devices)
MM12W2A	Wide With Aperture	38mm x 28mm	12 packs of 2 / box (24 devices)
MM12W2S	Wide Solid Seal	38mm x 28mm	12 packs of 2 / box (24 devices)

Device Schematics



Regulatory Information

microMend® PRO is a Class I 510(k)-exempt medical device that is intended for use to connect external tissues to temporarily to aid healing. It is listed with the FDA as a “Staple, Removable (Skin)” and a “Tape and Bandage, Adhesive”. Under this classification it is a minimal risk device that can marketed after registering the product with the FDA.

Class I medical devices are those devices that have a low to moderate risk to the patient and/or user. Due to the lower risk class, the FDA has exempted the requirement for pre-market notification (i.e. 510(k)) and for demonstrating evidence that the medical device intended to be marketed is safe and effective.

IDENTIFIER	DESCRIPTION
Proprietary Name:	microMend; microMend PRO
Classification Name:	STAPLE, REMOVABLE (SKIN)
Product Code:	GDT
Device Class:	1
Regulation Number:	878.4760
Medical Specialty:	General & Plastic Surgery
Registered Establishment Name:	KITOTECH MEDICAL INC
Registered Establishment Number:	3012261738
Owner / Operator:	KitoTech Medical Inc
Owner / Operator Number:	10051211
Establishment Operations:	Manufacturer

Source: <https://www.accessdata.fda.gov/scripts/cdrh/cfdocs/cfr/rl.cfm?lid=483554&lpd=GDT>

For General Product Information:
corza.com/micromend-pro-for-emergency-medicine

For Samples, Inservice, and Product Questions:
Contact Customer Service at 1-877-991-1110

For eCommerce and Product Orders:
store.corza.com/micromend-pro

microMend[®] PRO

———— Skin Closure Device ————

DISTRIBUTED BY



Manufactured For:
KitoTech Medical, Inc.
1525 11th Avenue | Seattle, WA 98122
www.micromendskinclosure.com

Distributed by:
Surgical Specialties Corporation
(a Corza Medical company)
247 Station Drive, Suite NE1
Westwood, MA 02090
corza.com

Customer Service
1-877-991-1110
service@corza.com