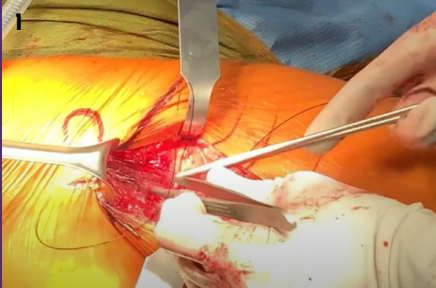
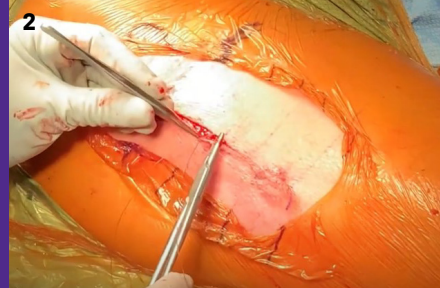


Case Report

The use of Quill® barbed suture in tissue closure after Total hip arthroplasty (THA).



1. Capsule closure with Quill RX-2066Q bi-directional suture.



2. Subcutaneous closure with Quill VLM-I020 uni-directional suture.



3. Subcuticular closure with Quill VLM-2012 uni-directional suture.

Patient history:

- 61 year old female with right hip osteoarthritis (ICD-10-CM: M16.11)
- Hypothyroidism
- >6 months of severe right hip pain.
- Tried and failed with NSAIDs, rest, intraarticular hip cortisone injection.
- Walking tolerance impaired.
- Limited activities of daily living.
- Hip ROM limited, shortened right leg ~1 cm
- X-Ray of right hip demonstrates severe osteoarthritis.

Surgical scenario:

- Primary, elective surgery.
- Outpatient surgery.
- Direct anterior approach of right hip arthroplasty.
- Performed supine on standard operating room table.
- No c-arm image required.
- Quill barbed suture used for closure.
- Skin glue on the skin surface.
- Anti-microbial dressing applied for 10 days.

Conclusion:

- Reduced closure time by 10 minutes with the use of Quill barbed sutures.
- In turn, it helped reduce our operation time by approximately 10 minutes.
- Reduced wound dehiscence.
- Enhanced distribution of wound tension.
- Reduced leakage with a water-tight closure
- Reduced the need for additional hemostatic sutures.
- Reduced strangulation of tissue.
- Improved skin cosmesis.

Suture preference card:

- **RX-2066Q:** Quill PDO, Violet, 2, 45cm x 45cm, Reverse Cutting, CP, Bi-Directional
- **VLM-1020:** Quill Monoderm, Undyed, 0, 45cm, Taper Point, SH, Uni-Directional
- **VLM-2012:** Quill Monoderm, Undyed, 2-0, 45cm, Precision Reverse Cutting, PS-1, Uni-Directional

Corza.com 1.877.991.110 Service@corza.com

Quill® is available through distribution or direct. For procedural videos, visit: [youtube.com/CorzaMedical](https://www.youtube.com/CorzaMedical)

References: The case report demonstrates the use of a surgical device by Dr. Jonathan Danoff, MD, Orthopedic Surgeon, New York USA. All information listed is according to the surgeon's preference, experience and patient needs.



Quill Barbed sutures are indicated for soft tissue approximation. Absorbable barbed sutures shall be used where the use of absorbable suture is appropriate and nonabsorbable barbed sutures are excluded from closure of the epidermis. Barbed sutures are not intended to be used by tying surgical knots. To avoid small bowel obstruction, care should be taken to not leave barbed suture ends adjacent to the peritoneum in extra-peritoneal tissue closure. As with all surgical sutures, adverse effects may include wound dehiscence, failure to provide adequate wound support, infection, minimal acute inflammatory tissue reaction at the wound site amongst others. For complete indications, contraindications, warnings, precautions, and adverse reactions, refer to the instructions for use (IFU).

Corza Medical, 247 Station Drive, Suite NE1, Westwood, MA 02090, U.S.A. The trademarks CORZA MEDICAL and QUILL are owned by Corza Medical. All other trademarks are the property of their respective owners. ©2023 Corza Medical. All Rights Reserved. Manufactured by Surgical Specialties México S. DE R.L. DE C.V., Corredor Tijuana-Rosarito 2000, #24702-B, Ejido Francisco Villa, Tijuana, B.C., C.P. 22235, Mexico.

COR-233 R0 1/2023